



THE HERITAGE

OFFICE LOFTS | 55 EAST RANDOLPH



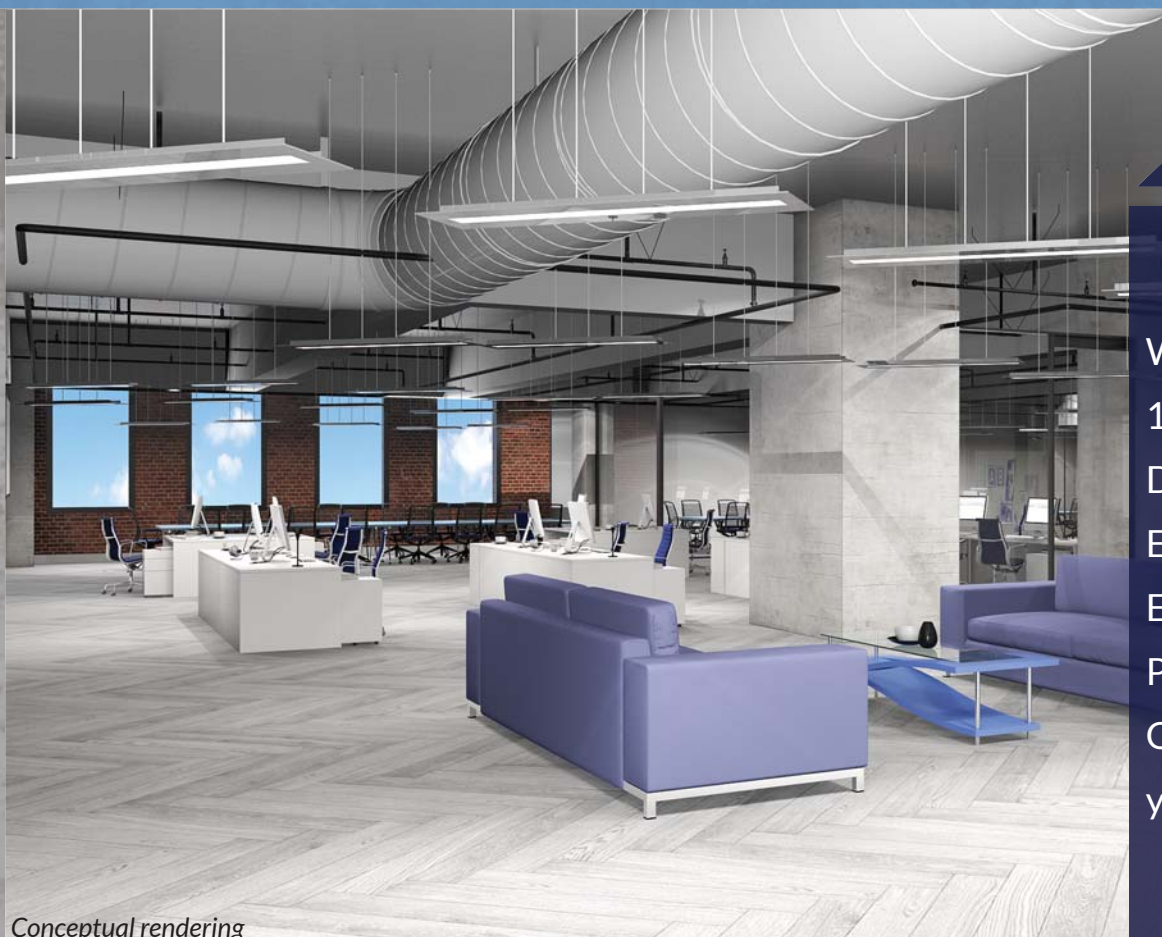


turn this...



into this

CONCRETE LOFT | 16,300 SF



- Wide open floor plan
- 14-foot ceilings
- Divisible to 2,500 SF
- Elevator identity
- Exterior building signage
- Parking available
- Opportunity to design your own space

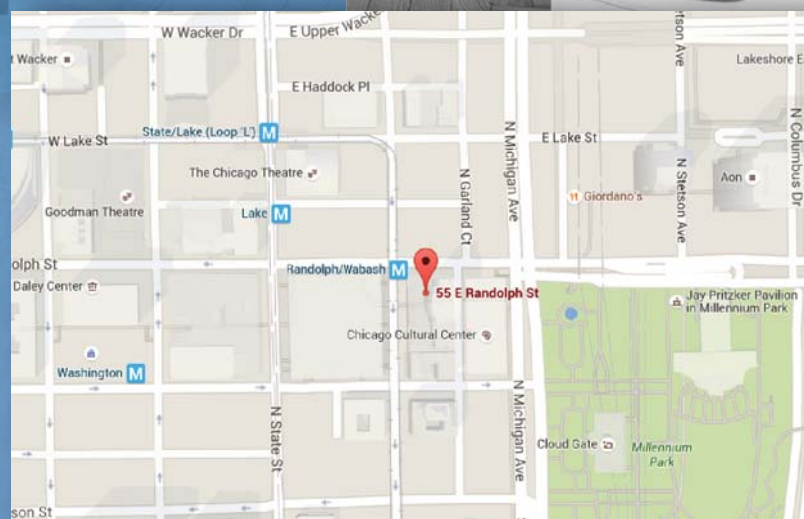
Conceptual rendering



Direct Pedway access with connections to the Red Line, Blue Line, Macy's, Block 37 mall, City Hall, Daley Center, and more

Adjacent to Millennium Park and numerous restaurants, cultural and shopping attractions including Michigan Avenue and State Street

Convenient to CTA public transit--one block from the upcoming L station at Washington/Wabash several bus lines including Loop Link and Millennium Station



Jonathan Zimmerman
jzimmerman@incommercialre.com
312-263-8787
ChicagoOfficeSearch.com

