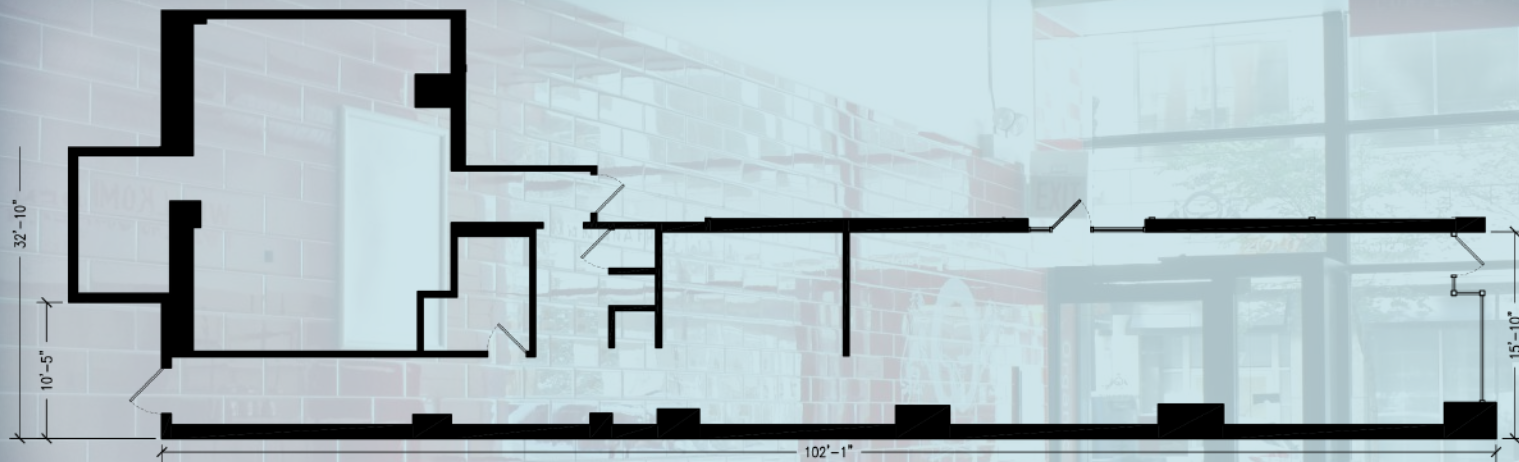




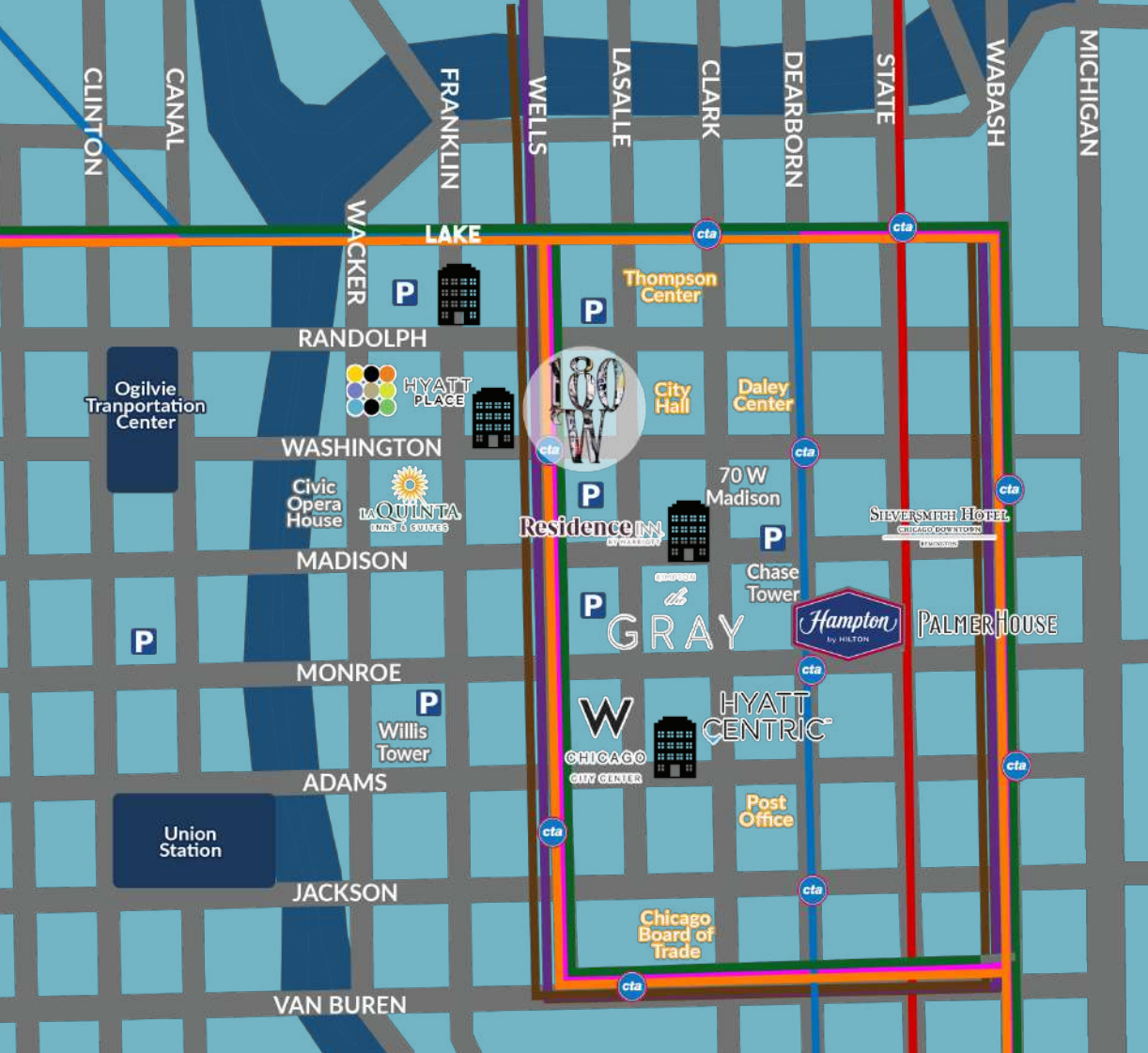
180 W WASHINGTON
RETAIL SPACE FOR LEASE



LOCATED AT THE BASE OF A 12-STORY OFFICE TOWER

3,110 SF FORMER FAST-CASUAL SPACE IN THE CENTRAL LOOP

FLANKED ON ALL SIDES BY OFFICE AND RESIDENTIAL TOWERS, HOTELS, AND GOVERNMENT BUILDINGS



12,000+
DAILY PEDESTRIAN TRAFFIC

1-MILE RADIUS DEMOGRAPHICS

AVGS. ESTIMATED 2021



POPULATION
97,000+



HOUSEHOLDS
61,000+



INCOME
\$172,700



BUSINESSES
25,000



VEHICLES PER DAY
15,500

CONTACT

JONATHAN ZIMMERMAN

312.263.8787

JZIMMERMAN@INCOMMERCIALRE.COM

CHICAGOOFFICESEARCH.COM

